



SCHOOL PERFORMANCE REPORT

Report Overview

The purpose of this document is to provide information pertaining to the 2024 St Mary's College, Broome year, in accordance with the requirements of The Australian Education Regulation 2013. A variety of headings are utilised to provide meaningful information for the Catholic Education Commission WA and various Government reporting requirements.

General Information

St Mary's College is a Catholic School situated in the Kimberley region of Western Australia. The 2024 student enrolment of 862 students was recorded from Kindergarten to Year 12. The College affirms its own multicultural identity. Maintaining an active commitment to reconciliation, the cultural story of every student and family is affirmed. The school promotes student leadership and encourages students to become independent and responsible individuals. As a Catholic school, Christian values challenge our endeavours to safeguard the uniqueness of each individual, the dignity of our relationships and our commitment to achieving excellence. St Mary's motto 'Listening Hearts' inspires autonomy for the individual to contribute to the creation of an Australian society grounded in Christ's Gospel. Students from beyond Broome can access St Mary's College by enrolling in the Broome Residential College.

Our Vision

We are recognised as a place of reconciliation in the way we live and promote social justice.

Our Mission

In partnership with families, we inspire all to learn, be creative and to have a listening heart.

Our Motto - Listening Hearts

We have empathy for each person's circumstances, hopes and dreams, and listen with our hearts to students, families and staff.

Strategic Intents

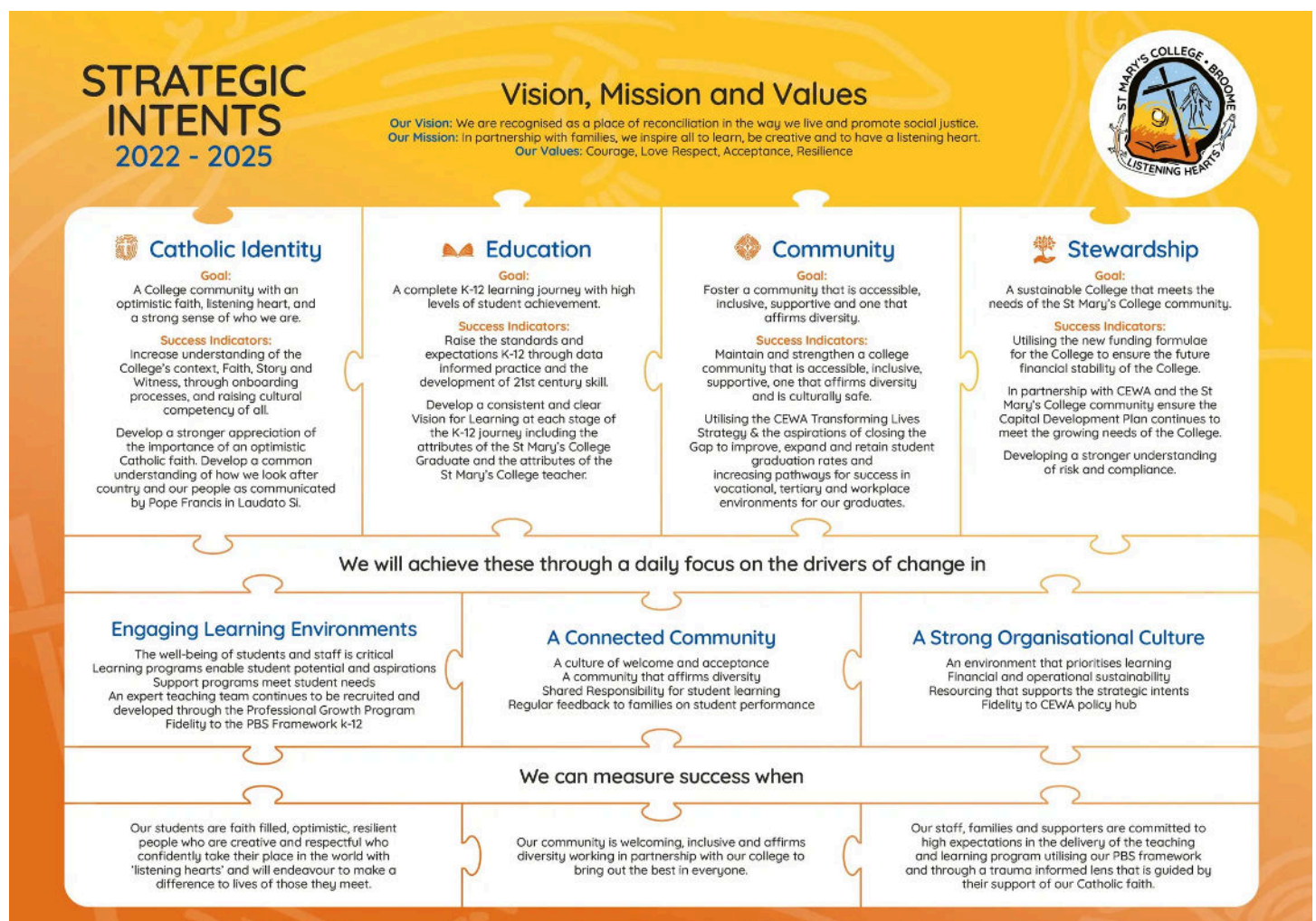
St Mary's College will play a lead role in the future of the Kimberley by creating a learning community where people of different cultures work together to enable all students to achieve their full potential. Together, as a whole school community, we can achieve great things.

We will continue to be distinguished by the way we live and promote social justice, reconciliation and all Christian values; our culture of achievement; and our safe, caring community. Our students will be recognised as faith filled, optimistic, resilient people who are creative and respectful, who confidently take their place in the world with "Listening Hearts".

Our college is proud of our Strategic Intents 2022-2025; a document that is a result of extensive consultation with our staff, students, families, School Advisory Council and College community. The Strategic Intents 2022-2025 sets out the key goals of the College and the associated drivers of change. We look forward to seeing the positive impact this will have on the lives of our students, staff and College community.

Annual School Improvement

[2024 Catholic School Improvement Plan](#)



Teacher Standards and Qualifications



The qualifications held by the teaching staff members are summarised as follows.

Masters	13
Bachelor Degree	84
Post Graduate Degree	9
Graduate Diploma	4
Diploma	7
Certificate	5

Workforce Composition



The College employed 80 teaching staff and 73 non-teaching staff. Non-teaching staff cover areas such as administration, technicians, teaching assistants and maintenance and grounds. Of our total workforce of 153 employees, 25% are Indigenous.

	Number
Teaching Staff	80
Male	21
Female	59
Non-Teaching Staff	73
Male	10
Female	63
Indigenous Composition	39

Student Attendance



Our student attendance rate for 2024 was 74%. An average rate of attendance in each of the respective year levels is as follows:

Year	% Attendance
Kindergarten	83
Pre-Primary	82
Year 1	80
Year 2	82
Year 3	80
Year 4	77
Year 5	82
Year 6	85
Year 7	71
Year 8	65
Year 9	65
Year 10	64
Year 11	55
Year 12	69

Student attendance at the College is monitored daily across two Campuses. The pastoral care processes ensure contact and appropriate follow-up with parents/carers regarding school absences by both administrative and relevant pastoral care staff (Heads of House) and mentors from our partner organisations, Deadly Sista Girlz and Clontarf Academy staff.

The College manages non-attendance of students by setting and expectation of parental communication regarding absence via telephone call, SMS, email, or written note of the reasons for their son/daughter's absence. If this is not received by the College, parents are prompted via phone call, SMS or (mailed) letter. In cases of chronic absenteeism, the school works with families to at first identify the reasons and then address them.

NAPLAN



NAPLAN is the name of literacy and numeracy tests completed by student in Australia. Students undertake NAPLAN in Years 3, 5, 7, and 9. Students are tested in Standard Australian English and about their knowledge in reading, writing and maths. Questions are written and spoken. The tests become easier or harder subject to how the students are progressing. The information from NAPLAN tests is used by the Australian Government , the State Curriculum Standards Authority and the College as a reference of student achievement against students all over Australia.

Year 3 NAPLAN Data

	St Mary's College	Similar Schools	CEWA	State	National
Reading	306	344	403	392	404
Writing	363	371	419	409	416
Spelling	317	346	401	395	404
Grammar	297	338	404	399	409
Numeracy	328	353	400	396	404

Year 5 NAPLAN Data

	St Mary's College	Similar Schools	CEWA	State	National
Reading	427	439	492	484	492
Writing	428	430	484	478	485
Spelling	428	444	489	485	486
Grammar	423	434	493	492	497
Numeracy	419	431	486	485	489

Year 7 NAPLAN Data

	St Mary's College	Similar Schools	CEWA	State	National
Reading	466	523	542	530	536
Writing	466	529	546	537	540
Spelling	484	532	545	542	540
Grammar	446	516	538	535	537
Numeracy	462	522	544	538	540

Year 9 NAPLAN Data

	St Mary's College	Similar Schools	CEWA	State	National
Reading	501	565	584	577	565
Writing	488	576	594	580	574
Spelling	521	562	573	570	567
Grammar	476	546	568	562	555
Numeracy	510	563	584	576	565

Parent, Student and Teacher Satisfaction



The College is committed to engaging with our College community; parents, students and staff. The College Strategic Intents aligns with the four key elements established by Catholic Education WA – Catholic Identity, Education, Community and Stewardship, and was developed in consultation with our College community.

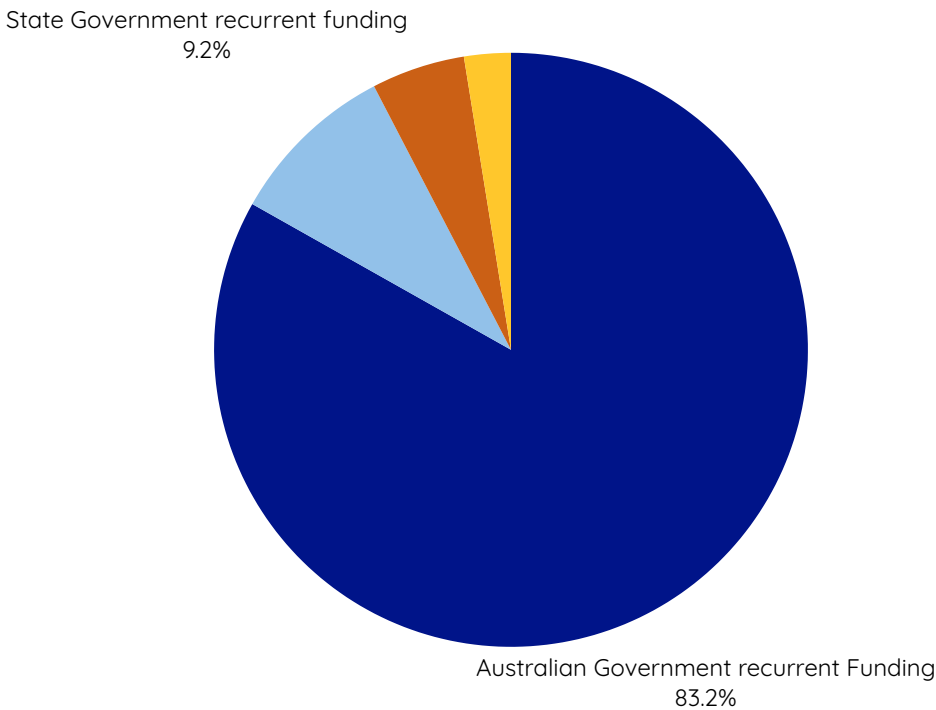
In the interest of continuous school improvement, the College invited the community to participate in the NSI Partnerships, School Climate Survey, from which the results have contributed to a focussed Catholic School Improvement Plan for 2025.

School Income



The total gross income for the school year ending 31 December 2024 was \$26,136,671. Information about the school’s finances is published on the My School Website and is available for public viewing.

- Australian Government recurrent Funding
- State Government recurrent funding
- Parent contributions
- Other private sources



Senior Secondary Outcomes



WACE Outcomes

- Number of students eligible = 42
- Number of students achieved WACE = 30



OLNA Achievement

- Number of students achieved Writing = 39 (92.9%)
- Number of students achieved Reading = 37 (88.1%)
- Number of students achieved Numeracy = 36 (85.7%)



VET Outcomes

- Number of students achieved Certificate II = 31
- Number of students achieved Certificate III = 1

Post School Destinations

Year 12 student post school destinations.

